

Drammens Teater

General info Studio Stage

Parking:	30 meter parking spot located alongside the venue load- in, in Øvre Stogate 12. Parking is only permitted on the right side of the street in marked up places. Permits will be issued by the venue representative. A 3 phase 32 A (400V) is available on request.
Load in:	Load in is at street level next to the parking space with lift access from the sidewalk to the stage.
Entrance Crew and Musicians:	Stage Entrance A next to load in with staircase access to dressing rooms
Wifi:	Network: Drammens Teater, gjest Log- in: Open
Dressing rooms:	4 dressing rooms w/ tap water and sink. 22 stations all together. Bath & toilets is located in the hall beneath to the dressing rooms. All these facilities are located upstairs from the back stage. A small common area with a coffee machine, seating 4- 6 people is located at the back stage.
dB Limit:	To ensure a healthy concert experience to our audience, and to comply with EU noise regulations towards our employees, we are enforcing a 103 dB (A) averaged over 15 minutes dB limit (Leq 15 = 103 dB(A)). Values will be measured at F.O.H. A properly calibrated measurement system Wave Capture RT-3 will be available to the sound engineer. We do not use a peak limiter or circuit breaker to enforce the rule.
Fire & Pyro	Approved permit from the local Fire Department and Drammens Teater must be applied to the risk management document before get- in.
Smoking	Drammens Teater is a smoke free building and according to national laws smoking is prohibited in all public areas including the stage and dressing rooms. An outside smoking area is located in the backyard of the theatre.
Smoke/ haze:	Our venues are environmentally certified. We encourage artists to minimize the use of theatrical smoke and fog. However, if smoke/fog (or strobes) is being used, we would like to receive a notification in advance, in order to inform the audience. If there is children on stage we strongly recommend no use of smoke/ haze.

Drammens Teater

Sound Equipment Studio Stage

FOH:	1	x	DigiCo SD9 w/ theatre software
Stage rack:	1	x	DiGiCo SD- rack, in 56 / out 24.
	4	x	Cat 6 between stage and FOH
Main Speaker System:	8	x	d&b Q1
	6	x	d&B Q-SUB
Amplification:	6	x	d&b D12
Front Fill:	2	x	d&b Q7
Amplification:	1	x	d&b D6
Monitor:			
Wedges:	10	x	d&b M4
Amplification:	4	x	d&b D12
Microphones:	2	x	Shure Beta 91a
	1	x	Shure Beta 91
	2	x	Shure Beta 52
	4	x	Shure SM 58
	4	x	Shure Beta 58
	1	x	Shure KSM9
	8	x	Shure SM57
	2	x	Shure Beta 57
	2	x	Shure Ksm 109
	4	x	Shure Beta 98 AMP
	1	x	Sennheiser MD 421
	2	x	Sennheiser MD 441
	2	x	Neumann KSM 105
	4	x	Neumann Km 184 Audio
	10	x	Technica ATM 350
	4	x	Audio Technica AT 4040
	1	x	Audio Technica AE 2500

DI:	4	x	Radial PRO 48 Active DI
	6	x	Radial ProDI Passive DI
	2	x	Radial ProD2 Passive Stereo DI
	2	x	Radial ProAV2 Passive Stereo
	1	x	DI Radial USB PRO
	6	x	LA Audio Active DI

**Frequencies
allowed for
wireless
microphones & IEM**

510 - 518 MHz (K 26)
614 - 622 MHz (K 39)
670 - 686 MHz (K 46- 47)
738 - 753 MHz (K - SDL)

Secondary frequency range: 494–694 MHz
and 733–758 MHz with maximum permitted
radiated power of 50 mW e.r.p.

The conditions for use of these secondary
frequency bands are that the use does not
disturb primary users of the band.

Contact:

Tormod Riseng – Sound technician
tormod@drammenscener.no

Rune Magnusson – Sound technician
rune@drammenscener.no

Ernst G. Hagby - Sound Technician
ernst@drammenscener.no

Toro Heiskala – Technical Manager
toro@drammenscener.no

dB Limit:

To ensure a healthy concert experience to our audience, and to comply with EU noise regulations towards our employees, we are enforcing a 103 dB (A) averaged over 15 minutes dB limit (Leq 15 = 103 dB(A)) and a 99 dB (A) averaged over 30 minutes (Leq 30 dB(A)). Values will be measured at F.O.H. A properly calibrated measurement system, WaveCapture RT-3 will be available to the sound engineer.

We do not use a peak limiter or circuit breaker to enforce the rule.

Drammens Teater

Sound Equipment Studio Stage (Extended)

Additional IO:	1	x	Trafo Split 3 way, Harting / Siemens / XLR
Monitor Mix:	1	x	DigiCo SD9 / Avid- Digidesign Venue Profile
Additional Wedges:	4	x	d&b M4
Drum Fill:	2	x	d&b Q-Sub
	1	x	d&b Q7
Amplification:	1	x	d&b D12
Wireless:	2	x	Shure AD4 Q A 470- 636 MHz
	4	x	Shure AD2 G56 470- 636 MHz w/ Beta 58 Heads
	6	x	Shure AD1 G56 470- 636 MHz Bodypacks
	6	x	DPA 4066 Headset microphones
In-Ear System:	8	x	Sennheiser EW 300 IEM G3
Range			626 - 668 MHz (B)

**Frequencies
allowed for
wireless
microphones
& IEM**

510 - 518 MHz (K 26)
614 - 622 MHz (K 39)
670 - 686 MHz (K 46- 47)
738 - 753 MHz (K - SDL)

Secondary frequency range: 494–694 MHz and
733–758 MHz with maximum permitted radiated
power of 50 mW e.r.p.

The conditions for use of these scondary
frequency bands are that the use does not
disturb primary users of the band.

Drammens Teater

AV Equipment Studio Stage

Projector: 1 x Barco RLM W8
Brightness: 8.000 center lumens
Resolution: 1,920 x 1,200
Aspect Ratio: 16:10
Lens: 1,74 - 2,17

Connections: HDMI at downstage Left or FOH

Screen: 4 x 3 Meters fixed frame

Monitor displays: 1 x 42" angeled floor stand

Drammens Teater

Stage and rigging Studio Stage

Stage:

Depth: 6 m

Width: 13 m

Proscenium height: 5 m.

Proscenium opening: 5- 11 m

Height to grid: 7 m

The stage floor is pine tree painted black.

Curtains:

1 x backdrop in black velvet w/ split.
4 x pair of legs in black velvet.
3 x borders in black velvet.

1 x cyclic in white cotton

There is no center curtain or front curtain.

All curtains are certified fire resistant. Any backdrops that are to be hung must be certified fire resistant. Please send this in advance or bring to venue manager latest on arrival.

Hanging points:

There are 10 pipe battens individually operated either by electric chain motor or by rope. 8 of these are above the stage and 2 are above the audience for front lights. Battens nr 1 and 2 (audience) has a weight limit of 300 kg (PQ) and 100 kg pr point (PL). Battens nr 3-8 has a weight limit of 150 kg (PQ) and 80 kg pr point (PL).

The pipe battens is only to be operated by authorized personnel.

Power:

2 x triple phase 63A 400V at upstage left

1 x triple fase 63A 230V upstage left

6 x single phase 16 A 230V located around the stage for backline

Drammens Teater

Lighting Equipment Studio Stage

Desk	1	x	GrandMA 2 Light
DMX Universes	4	x	1 used for house rig, 3 empty universes on stage
Dimmers	96	x	ETC Sensor+ 3kW pr channel
Automated Lights	8	x	Martin Aura XB
	7	x	Clay Paky Alpha Spot HPE 700
	5	x	Clay Paky Alpha Wash Halo 1200
Generic Front Lights	12	x	Spotlight Area 12 1,2 kW fresnels
	10	x	ETC Source4 jr 25-50 profiles
Generic Stage Lights	24	x	Par64 CP60 (some paired two per channel)
	2	x	4lights (one channel per fixture)
	8	x	Spotlight Area 12 1,2 kW fresnels (high side lights)
Atmospheric	1	x	MDG Atmosphere APS, controlled from stage

Contact:

Toro Heiskala – Technical Manager
toro@drammenscener.no

Thomas Evensen – Lighting Technician
thomase@drammenscener.no

Ståle Kilen – Lighting Technician
stale@drammenscener.no

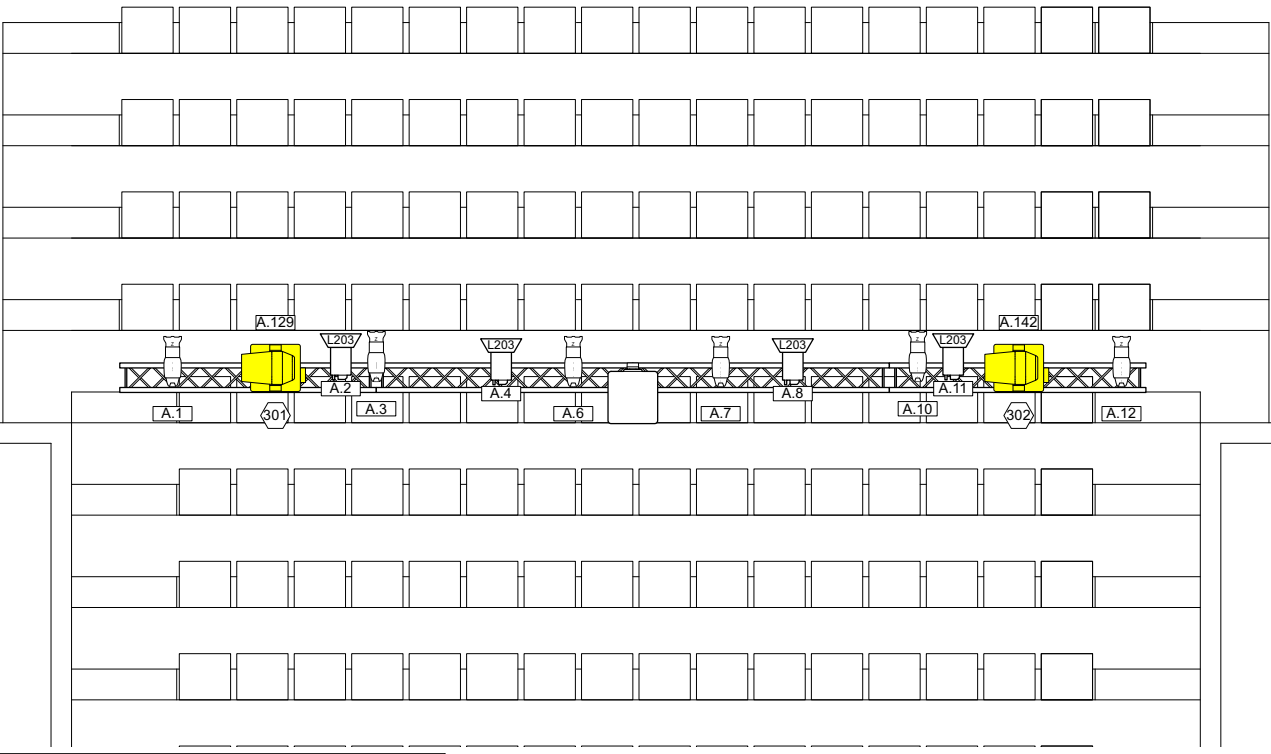
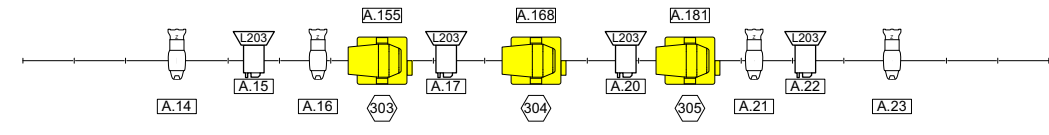
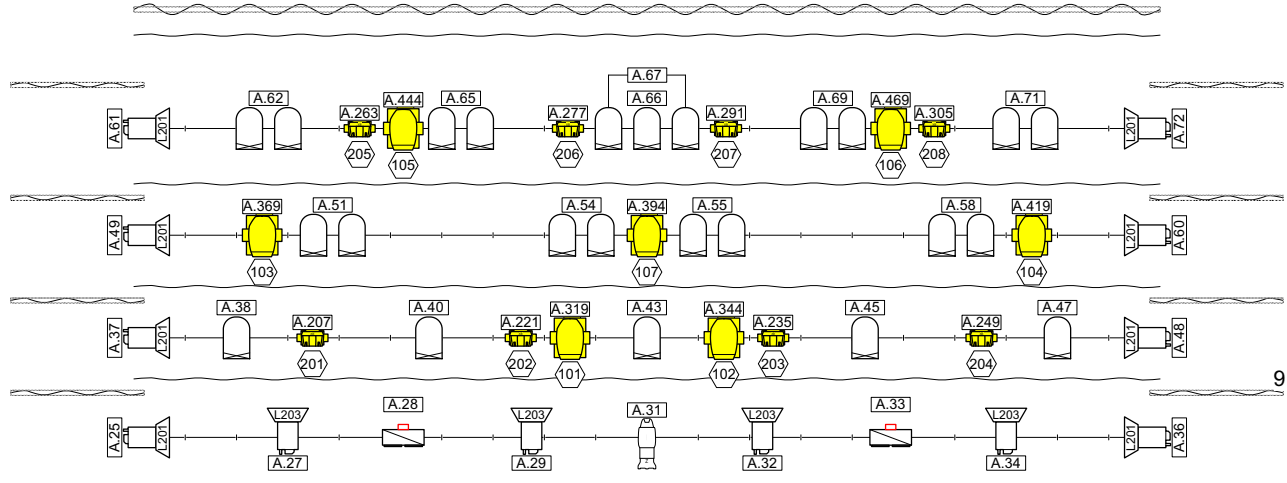
Tommy Aschim – Lighting Technician
tommy@drammenscener.no








97-102

103-108

85-90

91-96

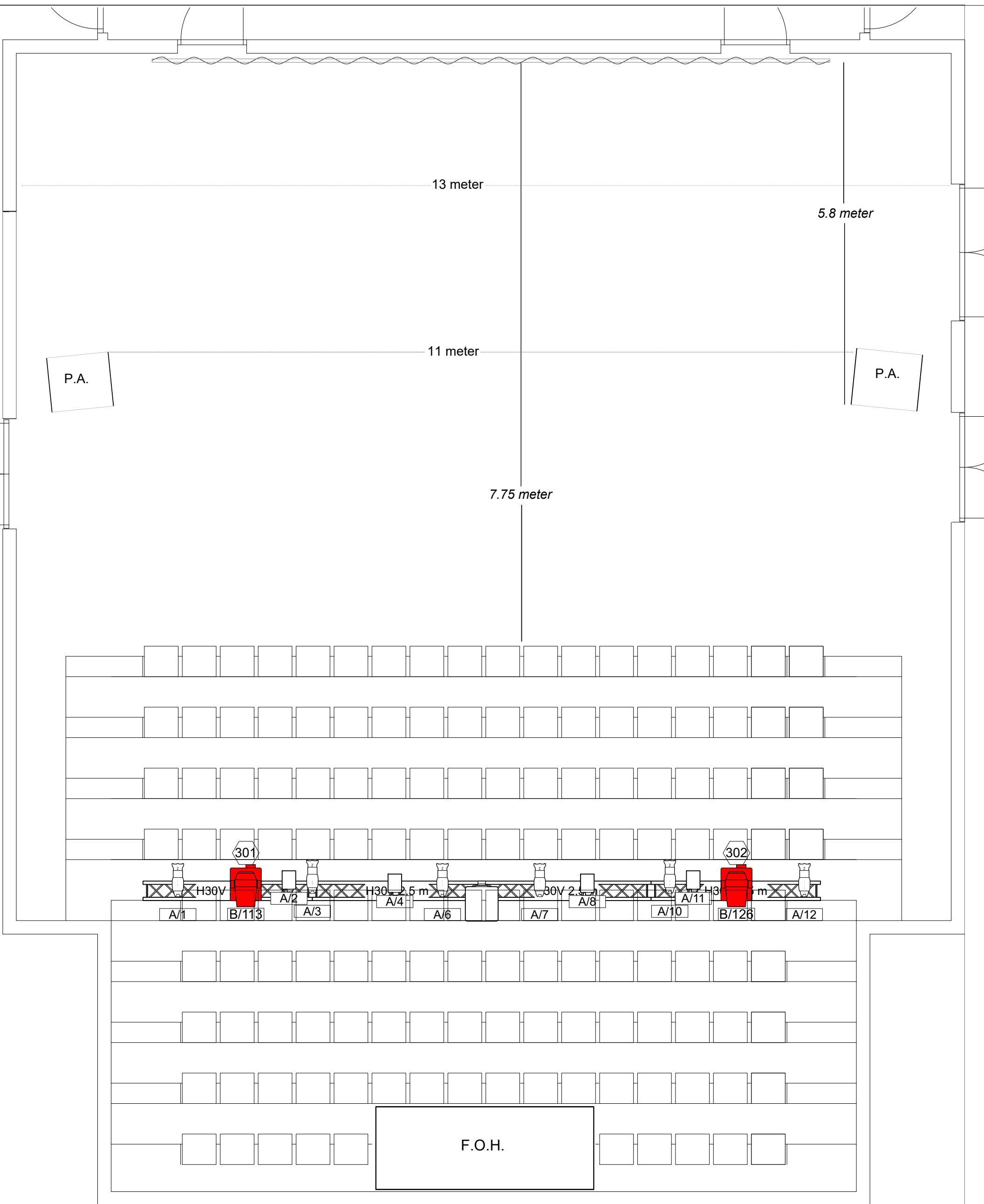








-  Clay Paky Alpha Spot HPE 700 Standard - Lamp on
-  Martin Mac Aura XB - Standard - Extended
-  Clay Paky Alpha Wash Halo 1200 extended vector off
-  ETC Source4 Jr Zoom
-  Spotlight AR 12
-  PAR64-CP60
-  Showtec Stage Blinder 4

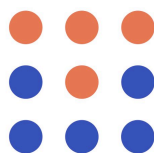


**DRAMMEN
SCENER**

Drammens Teater		
Studioscenen		
LX Plot	Drawn By Thomas Evensen	Date 01/02/2024



-  Martin Mac Aura XB
-  Clay Paky Alpha Wash Halo 1200 extended vector off
-  ETC Source4 Jr Zoom
-  Spotlight AR 12
-  USITT PAR64-VNSP
-  Showtec Stage Blinder 4



**DRAMMEN
SCENER**

Drammens Teater

Studioscenen

LX Plot

Drawn By
Thomas Evensen

Date
19/01/2022